

<div>Product type:</div> <div>Product:</div> <div>Total qty:</div> <div>Product colors:</div> <div>Position:</div>	<div>Terms and Conditions:</div>	<div>Approved By:</div> <div></div> <div>Date:</div>
--------------------------------------------------------------------------------------------------------------------	----------------------------------	------------------------------------------------------

Production Worksheet

EmbroideryStudio 2026 - Designing

XMASGORGON-FLAT

Design: xmasgorgon-flat

Title:

Stitches: 13.616

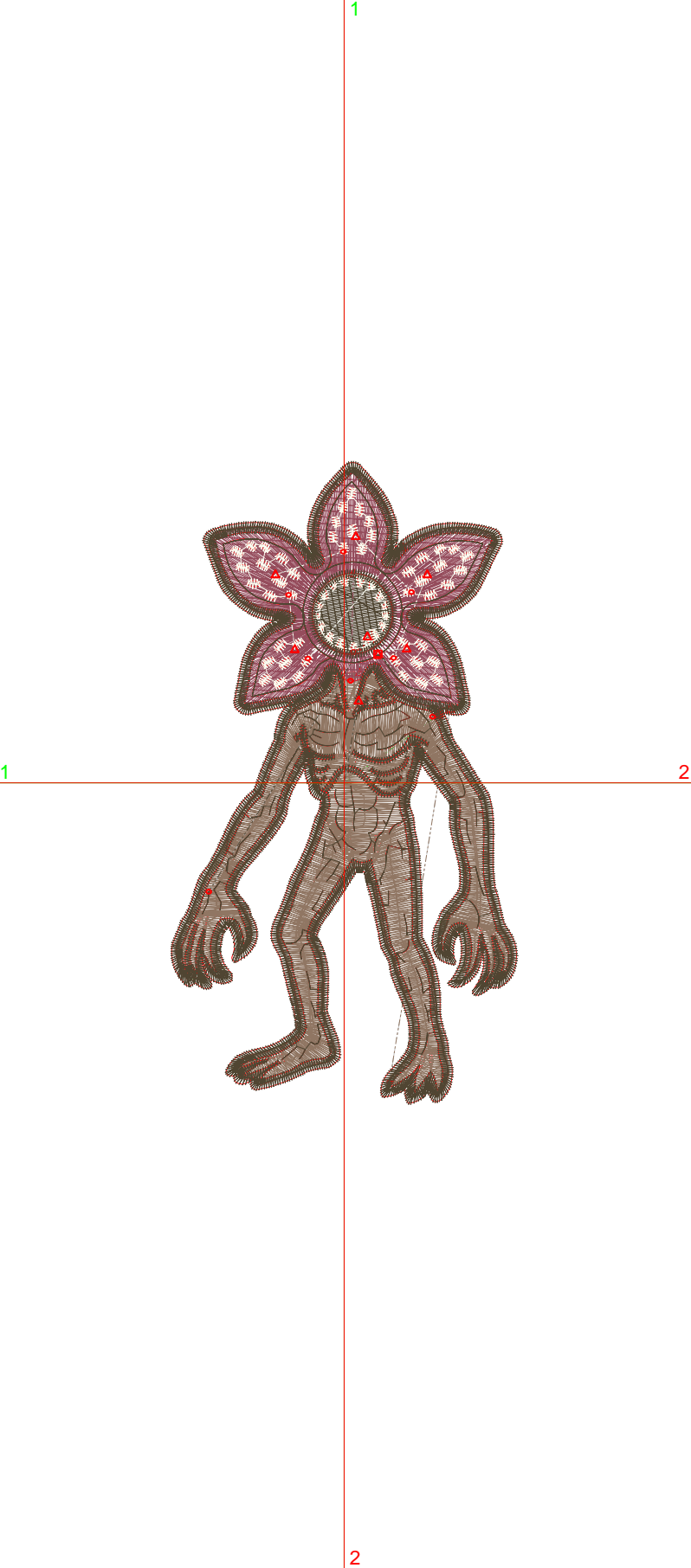
Height: 98.3 mm

Width: 53.1 mm

Colors: 7

Colorway: Colorway 1

Zoom: 1:1



Machine format: Tajima

Color changes: 7

Stops: 10

Trims: 13

Appliqués: 0

Left: 26.5 mm

Right: 26.5 mm

Up: 49.2 mm

Down: 49.2 mm

EndX: 0.0 mm

EndY: 0.0 mm

Area 5219.9 mm²

Max stitch: 10.8 mm

Min stitch: 0.2 mm

Max jump: 6.5 mm

Total thread: 70.87m

Total bobbin: 25.27m

Stop Sequence:

#	N#	Color	St.	Code	Name	Chart
1.	7		743		placement	
2.	1		2.767	1729	Buckskin	Madeira PolyNeon 40
3.	4		287	1872	Brunette	Madeira PolyNeon 40
4.	2		2.279	1919	English Rose	Madeira PolyNeon 40
5.	3		981	1803	Cream White	Madeira PolyNeon 40
6.	4		1.802	1872	Brunette	Madeira PolyNeon 40
7.	4		1		Brunette, Stop	
8.	6		736		ADD Back Felt	
9.	6		1		ADD Back Felt, Stop	
10.	5		4.017	1872	Brunette	Madeira PolyNeon 40

Color Film

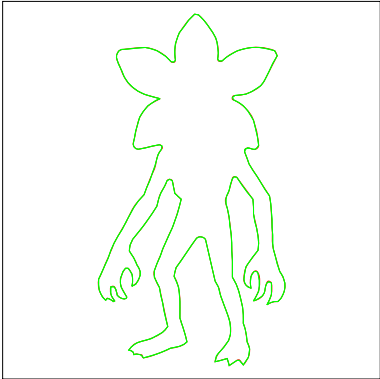
EmbroideryStudio 2026 - Designing

XMASGORGON-FLAT

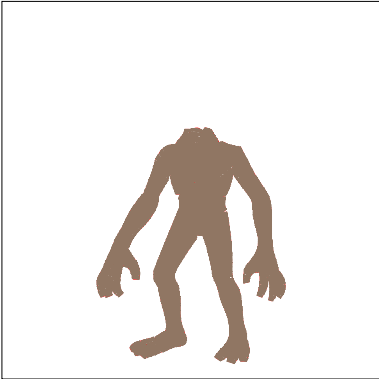
Design: xmasgorgon-flat

Title:

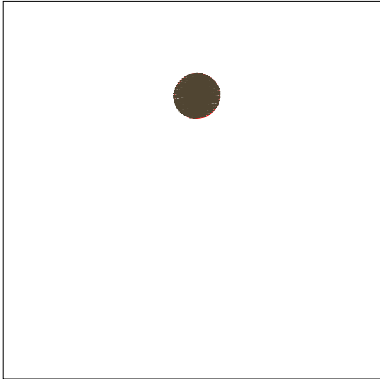
Stitches: 13.616
Height: 98.3 mm
Width: 53.1 mm
Colors: 7
Colorway: Colorway 1
Zoom: 0.48



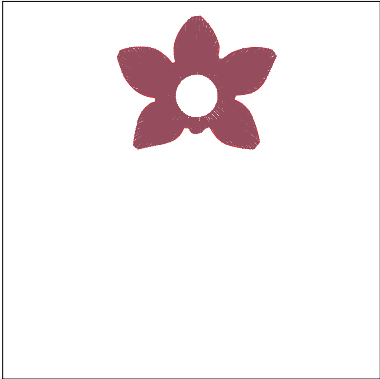
Color: 7
Stop: 1
Element:
Code:
Name: placement
Chart:
Stitches: 743
Thread used: 3.06m



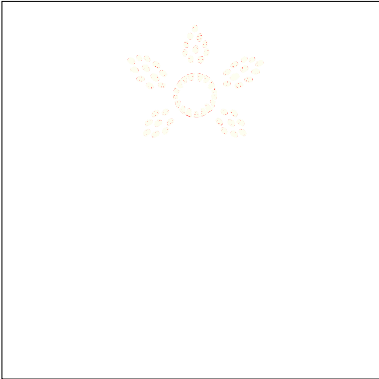
Color: 1
Stop: 2
Element:
Code: 1729
Name: Buckskin
Chart: Madeira PolyNeon 40
Stitches: 2.767
Thread used: 20.80m



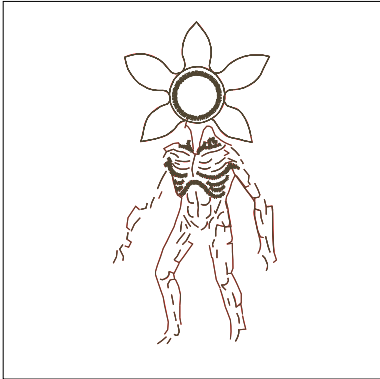
Color: 4
Stop: 3
Element:
Code: 1872
Name: Brunette
Chart: Madeira PolyNeon 40
Stitches: 287
Thread used: 1.61m



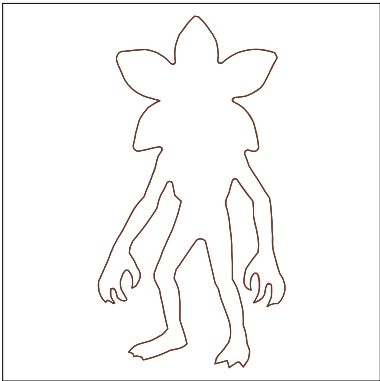
Color: 2
Stop: 4
Element:
Code: 1919
Name: English Rose
Chart: Madeira PolyNeon 40
Stitches: 2.279
Thread used: 12.86m



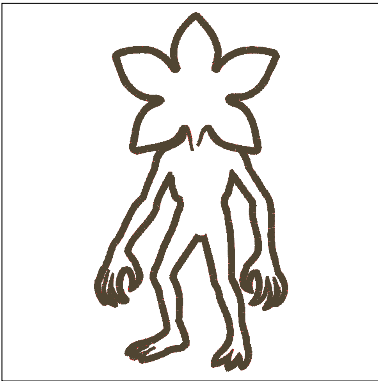
Color: 3
Stop: 5
Element:
Code: 1803
Name: Cream White
Chart: Madeira PolyNeon 40
Stitches: 981
Thread used: 3.55m



Color: 4
Stops: 6,7
Element:
Code: 1872
Name: Brunette
Chart: Madeira PolyNeon 40
Stitches: 1.803
Thread used: 6.71m



Color: 6
Stops: 8,9
Element:
Code:
Name: ADD Back Felt
Chart:
Stitches: 737
Thread used: 3.05m



Color: 5
Stop: 10
Element:
Code: 1872
Name: Brunette
Chart: Madeira PolyNeon 40
Stitches: 4.017
Thread used: 18.22m